

Quantitative Standards Compliance Matrix - 3 Bed 5 Person House

Standards	Min Floor Area	Min Living Room Area	Aggregate Living Area	Min Living Room Width	Min Storage Area	Aggregate Bedroom Area	Master Bed Size	Double Bed Size	Double Bed Width	Single Bed Size	Single Bed Width	Parking Spaces	Private Open Space
Quality Housing / Fingal Standards	92.0m²	13.0m²	34.0m²	3.8m	5.0m²	32.0m²	13.0m²	11.4m²	2.8m	7.1m²	2.1m	-	60.0m²
Standard Provided	111 m²	16.9 m²	40.1 m²	✓	7.1 m²	37.2 m²	15.1 m²	11.6 m²	✓	10.5 m²	✓	2	60.6 m²

References  
Quality Housing For Sustainable Communities - 2007

Notes:  
\*\*Private Open Space includes ground floor and upper level terraces. Ground floor private open space will vary between plots.

Area
Level 0 53 m²
Level 1 58 m²
Level 2
TOTAL 111 m²
Glenveagh 3 bed target area: 108m² 114m² & 125m²
Note: Area measured according to RICS

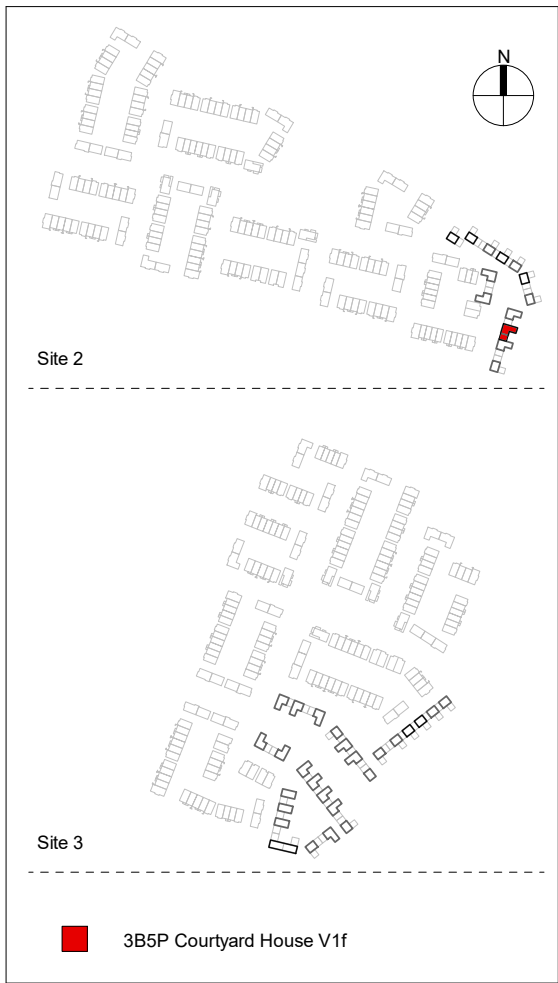
Quantity
1

- general notes
- This drawing is copyright Proctor and Matthews Architects and must not be copied in whole or part without prior consent.
  - Do not scale from this drawing.
  - Refer to drawing number.
  - This drawing is to be read in conjunction with all other relevant architects and engineer's drawings.
  - All dimensions to be checked on site prior to commencement of works and any discrepancies are to be checked with the architect immediately.
  - Unless otherwise stated all dimensions are in mm.

Typology Notes

- ▲ Main Entrance Main entrance
- Home Office Area
- Air Source Heat Pump
- Service Intake Cupboard
- Storage Area

Floor to floor: 2790mm  
Floor to ceiling: 2450mm  
Floor zone: 340mm



P01	08.12.21	For Planning	LG
/	26.10.21	For Planning	LG
rev	date	description	dw

client Glenveagh

project A496 Lands at Hollystown-Kilmartin

status S4 - Suitable for stage approval

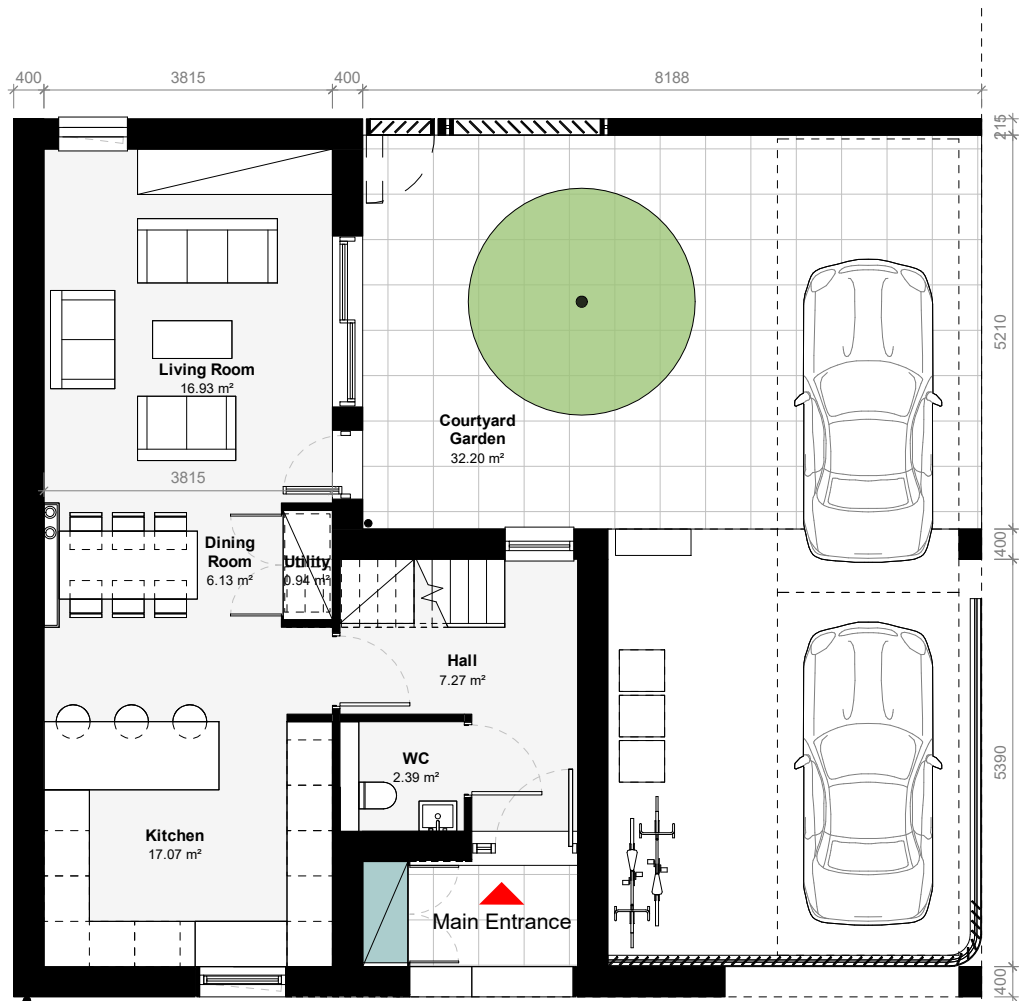
drawing title 3 Bed 5 Person 2 Storey Courtyard House V1f - Plan

drawing no A496-PMA-XX-XX-DR-A-1018

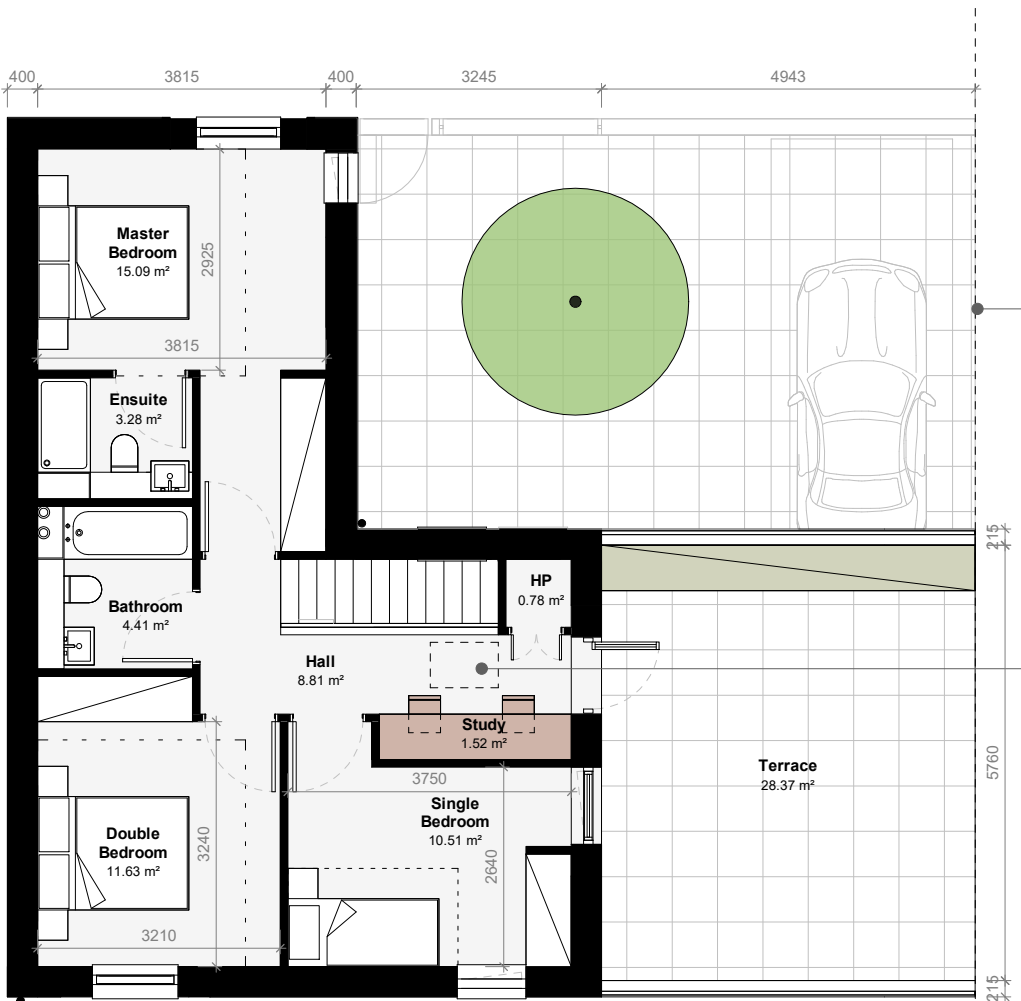
project no	- originator	- volume	- level	- type	- role	- number
scale	1:100	date	10/21/21	drawn	LG	
original	A2	revision	P01	checked	CM	

Proctor & Matthews Architects

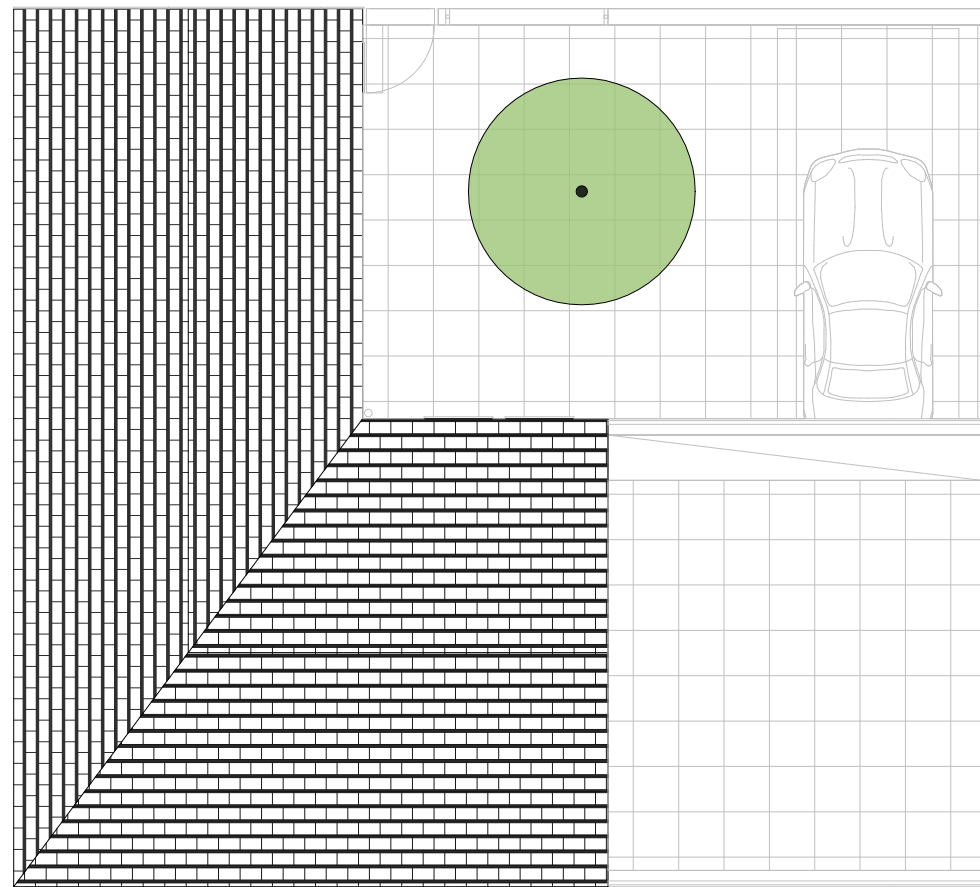
address 7 Blue Lion Place, 237 Long Lane, London SE1 4PU  
telephone +44 (0)20 7378 6695  
fax +44 (0)20 7378 1372  
email info@proctorandmatthews.com  
website www.proctorandmatthews.com



Courtyard House 3b5p\_Level 0\_V1f



Courtyard House 3b5p\_Level 1\_V1f



Courtyard House 3b5p\_Roof Plan\_V1f

Plot 3